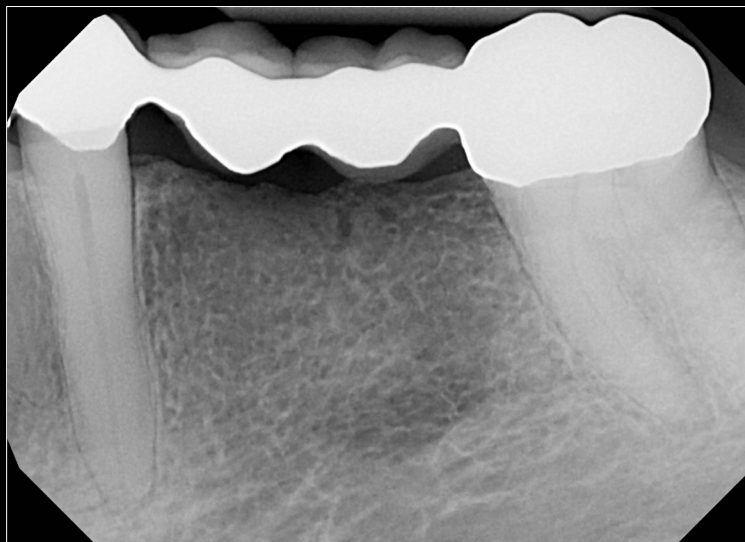


Have you ever taken a 2D X-ray and still been unsure of the diagnosis?



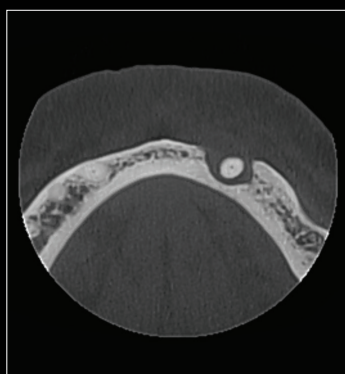
Be confident in your diagnosis with exceptional 3D image quality at an even lower patient dose compared to intraoral images.*



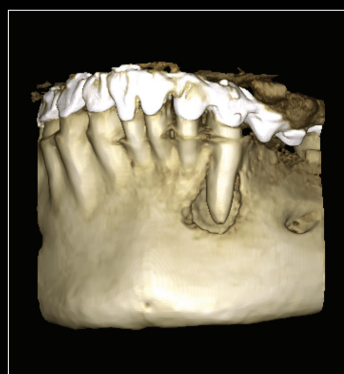
Sagittal View



Coronal View



Axial View



3D Rendering

PLANMECA
Better care through innovation

See the Planmeca Difference

With advanced features only available with Planmeca extraoral imaging, you will see the difference in image quality and diagnose with confidence.

- Diagnose rapidly and more accurately
- Eliminate the need for retakes
- Drastically reduce watches on teeth
- Increase efficiencies and productivity
- Deliver excellent patient care
- Enjoy faster return on your investment for a healthier practice

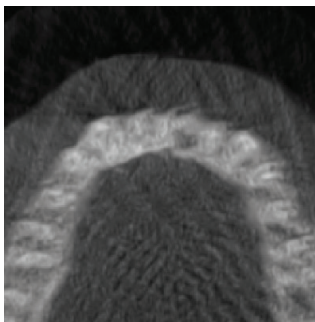
Nothing comes close to the innovation and technology of a Planmeca CBCT system.



Planmeca AutoFocus™



Planmeca CALM® Motion Reduction Technology

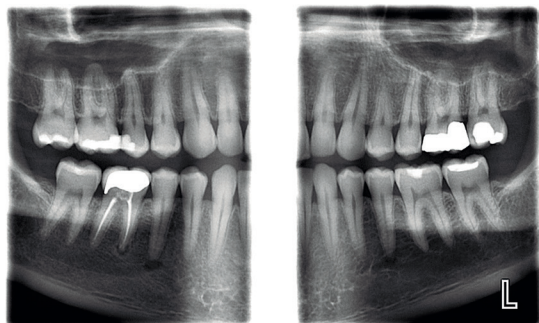


Without Planmeca CALM®

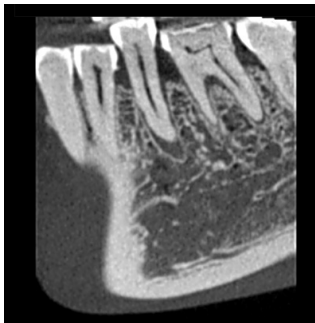


With Planmeca CALM®

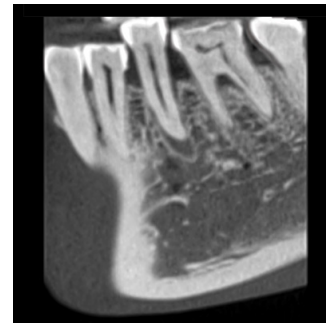
True Extraoral Bitewings



Planmeca Ultra Low Dose™



Normal Radiation Dose



Planmeca Ultra Low Dose™



SCAN HERE TO
LEARN MORE

Contact your local Planmeca representative
for more information (800) 718-4598

* John B. Ludlow, DDS, MS, FDS, RCSEd The Risks of Radiographic Imaging. Dimensions of Dental Hygiene; June 2012; 10(6): 56, 59-61. Planmeca effective patient radiation doses D0011311-B, on file.

PLANMECA
Better care through innovation

planmeca.com