

Shade
matching
just got
simpler.

3M™ Filtek™ Easy Match Universal Restorative

- ▶ Intuitive Shade Selection
- ▶ Naturally-Adaptive Opacity
- ▶ Reduced Inventory





Part of the 3M™ Filtek™ Dental Restorative family

Trusted for more than
50 years. 2 billion
restorations – and counting.



Powered by our **TRUE** nanotechnology, 3M™ Filtek™ Dental Restoratives have helped clinicians around the world create over 2 billion restorations. The Filtek family gives you the options you need for virtually any clinical situation: from anterior to posterior, high-end esthetics to highly efficient procedures, and everything in between. Whether you need a universal, flowable or bulk-fill composite, anterior or posterior, the Filtek family gives you esthetic and efficient solutions.

“I really like Filtek Easy Match Universal Restorative. The composite handles very well and polishes very nicely. The simplified shade system yields very nice results without layering.”

– Dr. Nick Marongiu
La Jolla, CA, USA



Excellent polish
retention



Excellent strength
and wear resistance



Firm
handling



Safe for composite
warming and
injection molding¹

1. Warm capsules up to 70°C/158°F for up to 1 hour.

3M™ Filtek™ Easy Match Universal Restorative

Bright. Natural. Warm. Just 3 shades deliver an excellent match to almost any patient's smile. That means a simpler workflow for single-shade restorations – with natural-looking results to make your patients proud.

3M™ Filtek™ Easy Match Universal Restorative is a streamlined system built on clinically proven nanotechnology, a hallmark of the globally trusted family of 3M™ Filtek™ Dental Restoratives. It simplifies shade matching by allowing you to go from observation to selection, quickly and intuitively.

Anterior or posterior. Without a blocker – and without sacrificing opacity.

Experience shade matching made simple. Easy. Intuitive.

- ✓ Just 3 shades: Bright, Natural, Warm
- ✓ No complicated shade guide
- ✓ No blocker required

Simplicity without sacrifice.

Some simplified shading systems come with esthetic drawbacks. Filtek Easy Match Universal Restorative both delivers an excellent shade match and blends with surrounding dentition, for natural-looking smiles.



“Filtek Easy Match provides a simple solution for everyday restorations. Streamline your inventory and deliver restorations that disappear!”

– Dr. Thomas Giacobbi
Chandler, AZ, USA

Shade selection is intuitive and straight forward:

Chroma, or color intensity, is only one of the components leading to a great shade match. Even a composite of the “right color” can stand out from surrounding dentition if its **value** (relative lightness/darkness) or **opacity** is not a good match as well.

Together, the 3 shades of 3M™ Filtek™ Easy Match Universal Restorative cover the VITA classical shades – no blocker needed.

“Filtek Easy Match Universal Restorative simplifies shade matching and allows very esthetic restorations in a more streamlined approach.”

– Dr. Augusto Robles
Anniston, AL, USA



Bright

Representative example of Bright tooth shade.



Bright: low chroma, high value



Natural

Representative example of Natural tooth shade.



Natural: balanced, mid-range chroma and value



Warm

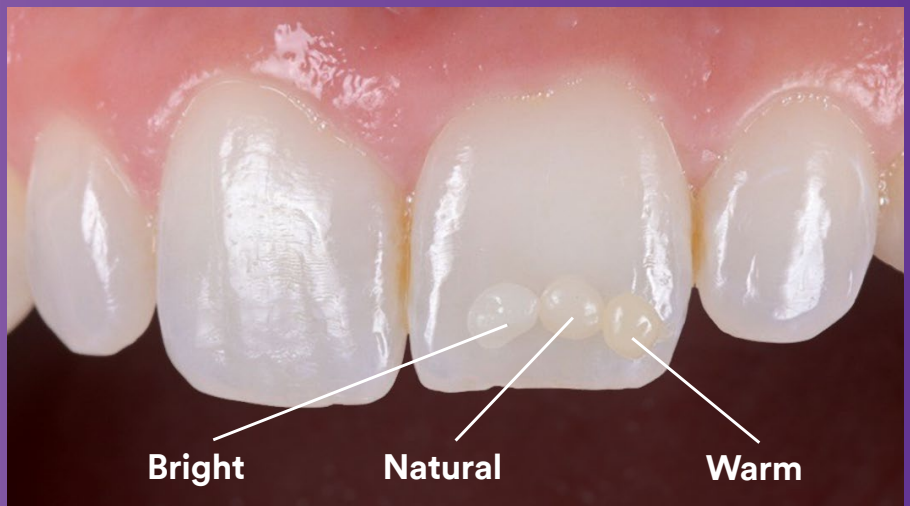
Representative example of Warm tooth shade.



Warm: high chroma, low value

Primary benefits you'll love

- Excellent shade match for most anterior and posterior restorations
- Quick, easy and intuitive shade selection without sacrificing opacity
- Simplified single-layer restorations, with no blocker needed
- Streamlined inventory helps reduce waste of infrequently used shades
- Firm handling
- Suitable for composite warming, which lowers extrusion force¹ without changing physical properties²



Courtesy of Dr. Brian Baliwas

1. Internal Data

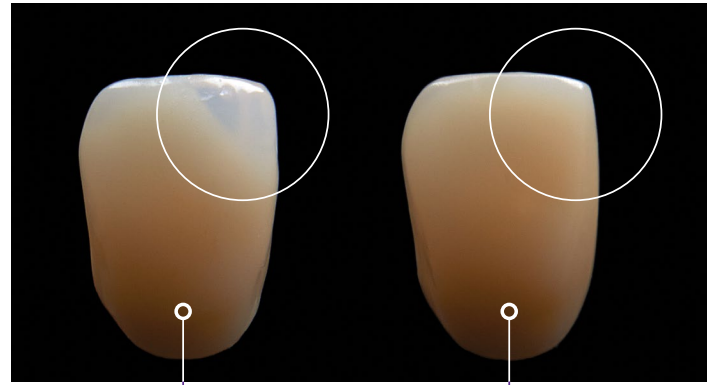
2. When warmed according to our IFU (capsules: up to 70°C/158°F for up to 1 hour)

How does it work?

With the power of naturally-adaptive opacity.

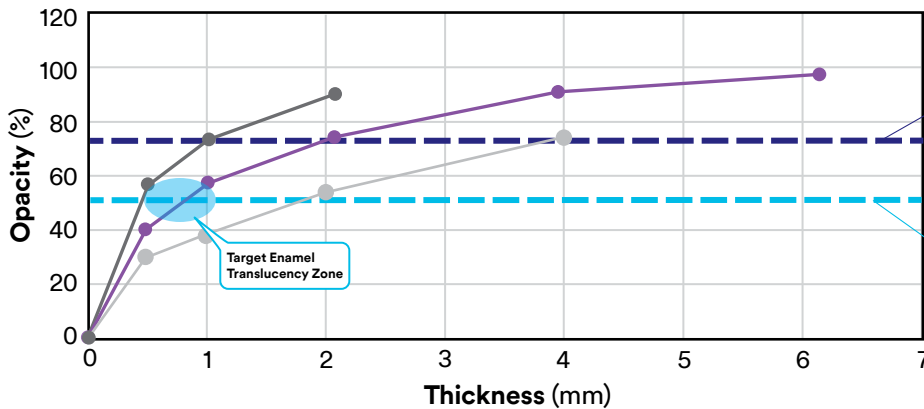
Unlike some single-shade systems, 3M™ Filtek™ Easy Match Universal Restorative doesn't need a blocker to mask the darkness of the oral cavity in anterior restorations. Its naturally-adaptive opacity delivers Enamel-like translucency at thicknesses of 0.5 to 1 mm – exactly where you need it for the bevel and incisal edge. In thicknesses ≥ 2 mm everywhere else, it delivers a Dentin-like opacity.

All composites become more translucent when applied in thinner layers. But the naturally-adaptive opacity of Filtek Easy Match Universal Restorative is optimally aligned with both dentin and enamel, helping it blend with surrounding tooth structure and delivering a natural look.



Tokuyama
OMNICHROMA®
No blocker used

3M™ Filtek™ Easy Match Universal
Restorative, Natural Shade
No blocker needed



Dentin Value
3M™ Filtek™ Easy Match shows
Dentin-like opacity
at thicknesses ≥ 2 mm

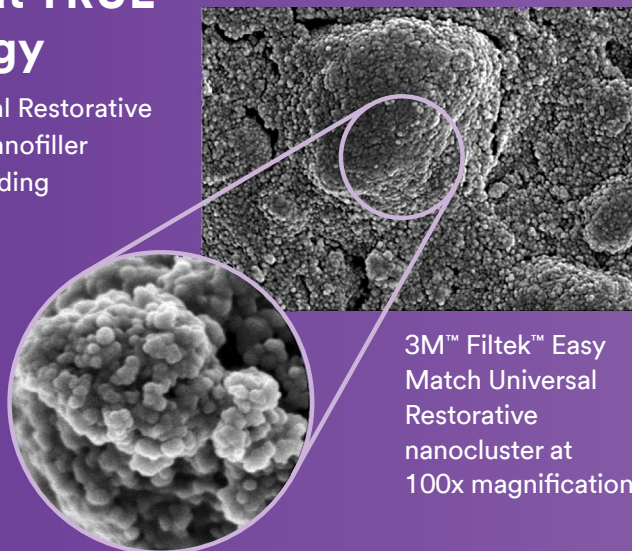
Enamel Value
3M™ Filtek™ Easy Match shows
Enamel-like translucency
at thicknesses of 0.5 - 1 mm

Source: Internal Data*

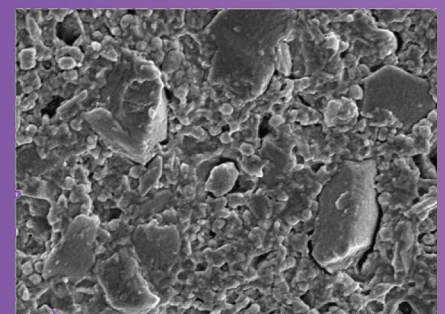
— 3M™ Filtek™ Supreme Ultra Universal Restorative A2-D — Tokuyama OMNICHROMA® (no blocker used)
— 3M™ Filtek™ Easy Match Universal Restorative

A closer look at TRUE nanotechnology

Filtek Easy Match Universal Restorative features the same **TRUE** nanofiller technology used in our leading Filtek Dental Restoratives. The unique nanoclusters enable excellent wear resistance and help the composite retain a smooth gloss.



3M™ Filtek™ Easy Match Universal Restorative nanocluster at 100x magnification



Leading competitive composite

SEM photos courtesy of Dr. J. Perdigao, University of Minnesota.



3M™ Filtek™ Easy Match Universal Restorative – Bright

Item #	Product Information
6110B	(20) Capsules, 0.2 g/each
6120B	(1) Syringe, 4 g/each



3M™ Filtek™ Easy Match Universal Restorative – Natural

Item #	Product Information
6110N	(20) Capsules, 0.2 g/each
6120N	(1) Syringe, 4 g/each



3M™ Filtek™ Easy Match Universal Restorative – Warm

Item #	Product Information
6110W	(20) Capsules, 0.2 g/each
6120W	(1) Syringe, 4 g/each

3M™ Filtek™ Easy Match Universal Restorative – Intro Kits

Item #	Product Information
6110K	(60) Capsules, 0.2 g/each: 20 each of shades Bright, Natural, and Warm
6120K	(3) Syringes, 4 g/each: 1 each of shades Bright, Natural, and Warm



3M.com/FiltekEasyMatch



Warranty: 3M warrants this product will be free from defects in material and manufacture at the time of purchase. 3M MAKES NO OTHER WARRANTIES INCLUDING ANY IMPLIED WARRANTY OF MERCHANTABILITY OR FITNESS FOR A PARTICULAR PURPOSE. User is responsible for determining the suitability of the product for user's application. If this product is defective within the warranty period, your exclusive remedy and 3M's sole obligation shall be repair or replacement of the 3M product.

Limitation of Liability: Except where prohibited by law, 3M will not be liable for any loss or damage arising from this product, whether direct, indirect, special, incidental or consequential, regardless of the theory asserted, including warranty, contract, negligence or strict liability.



Solventum Dental Solutions
2510 Conway Avenue East
Maplewood, MN 55144
USA

Phone 1-800-634-2249
Web 3M.com/dental

*Source: Internal data. Tokuyama OMNICHROMA®
Lot #098E53, #002EY8; Filtek™ Easy Match Universal Restorative Lot #9533695, #NE57998.

©Solventum 2024. Solventum, the S logo and Filtek are trademarks of Solventum or its affiliates. 3M and the 3M logo are trademarks of 3M. Other trademarks are the property of their respective owners. All rights reserved. REV. 4/2024 70-2013-8166-5