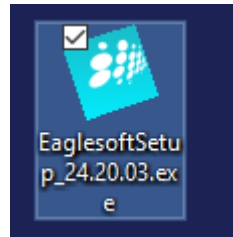
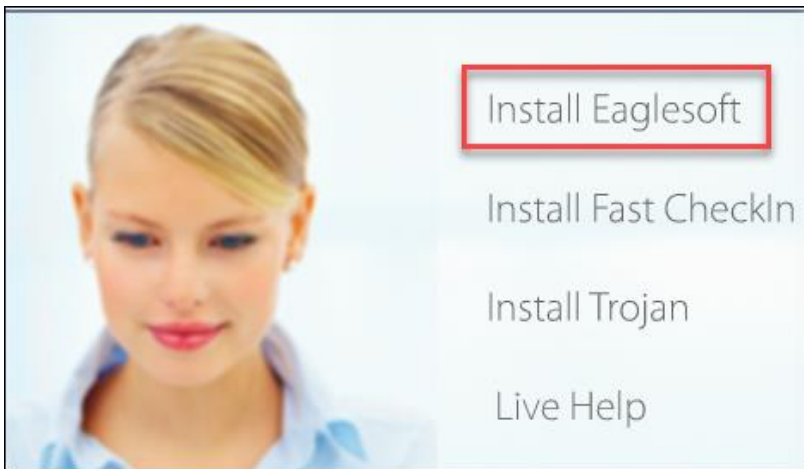


Eaglesoft 24.20 Workstation Installation

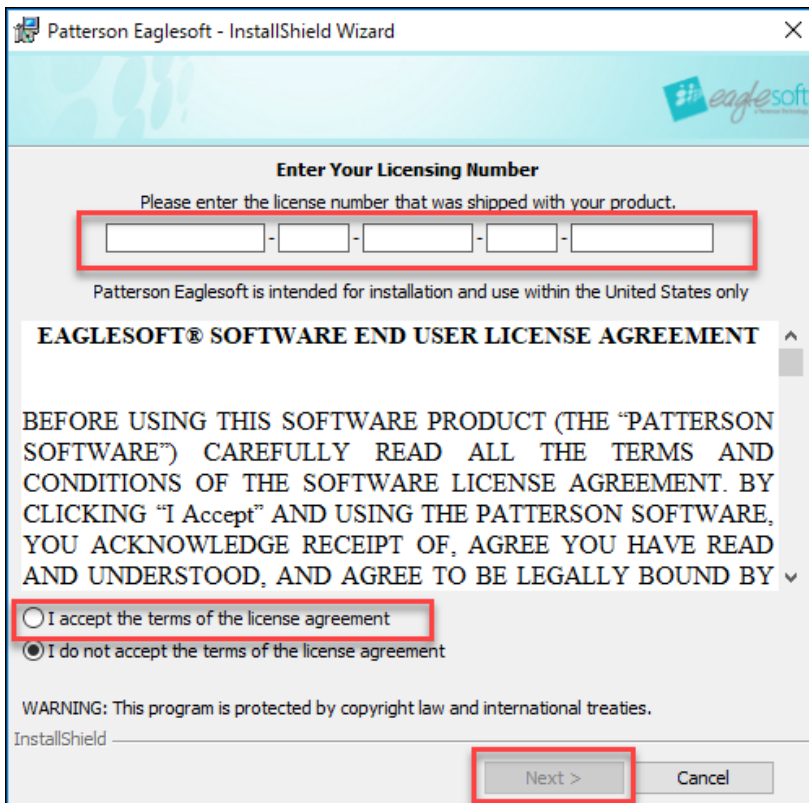
- Utilize these instructions when installing on a new workstation or upgrading from Eaglesoft 20.00 or below.
- It is estimated the installation for each workstation is between 5 and 30 minutes.
- Confirm the Workstation meets [Hardware Requirements](#).
- Run any outstanding Windows Updates first and reboot the workstation.
- Eaglesoft 24.20 must already be installed on the server computer.
- Close any running programs including Eaglesoft on this workstation.



- Download Eaglesoft 24.20.
- Double Click the **EaglesoftSetup_24.20.03.exe** to launch the installation.



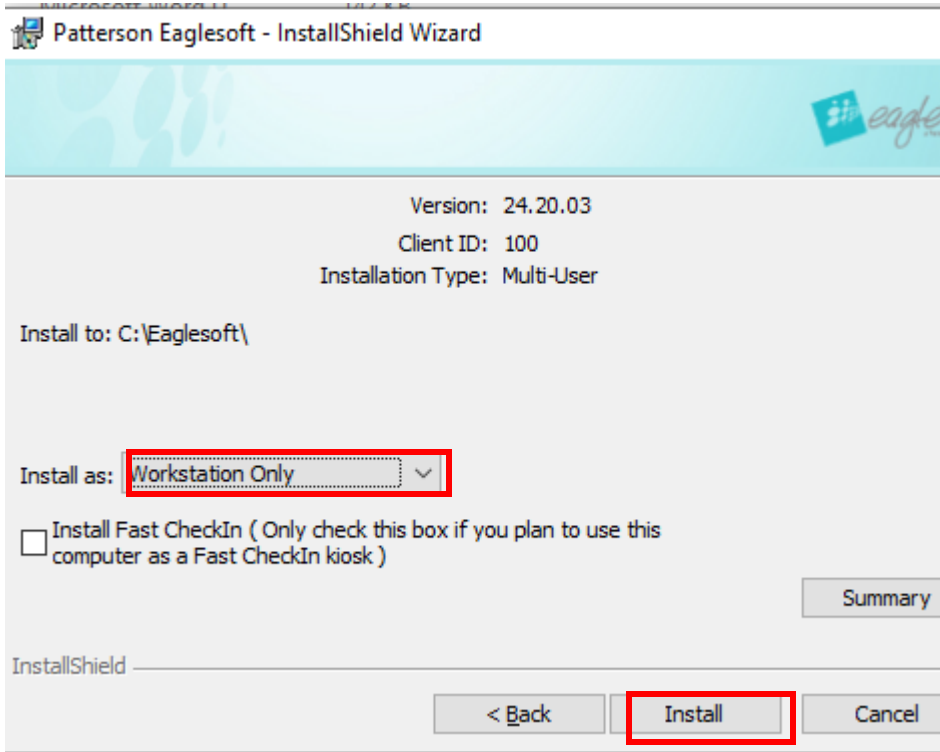
- Select **Install Eaglesoft**.



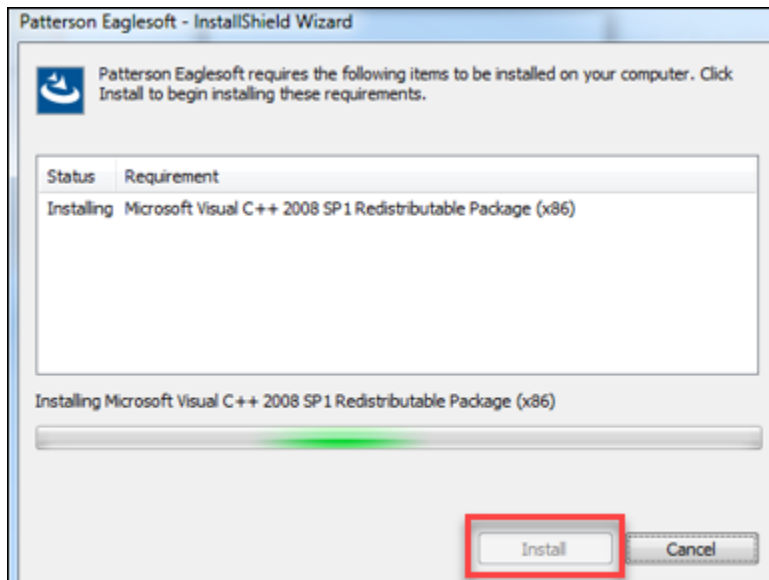
- Enter the **License Number**.

To obtain the Practice License Number [Chat Live Now!](#)

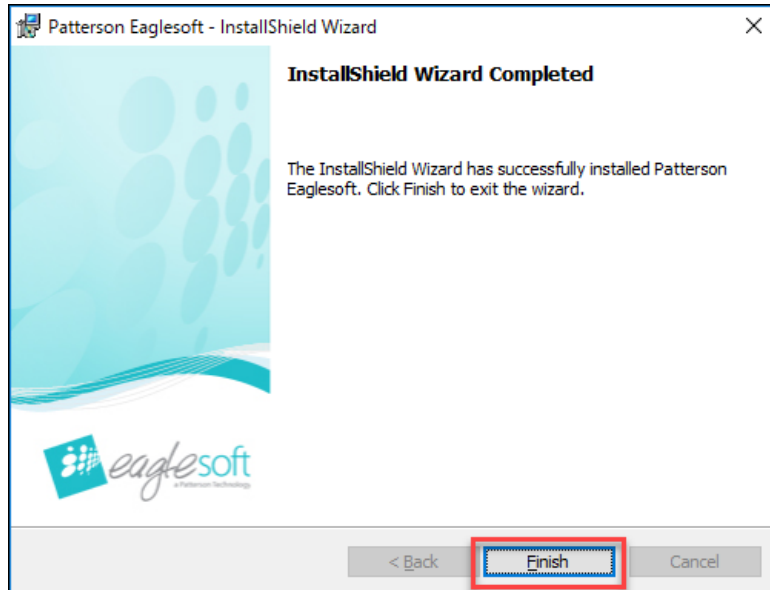
- Choose **I accept the terms of the license agreement**.
- Select **Next**.



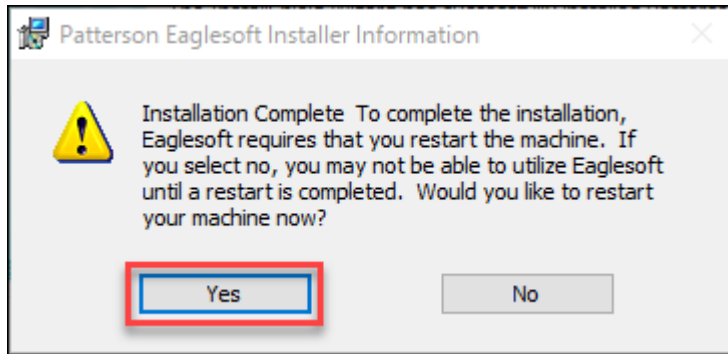
- Next to Install as, choose **Workstation Only**.
- Select **Install**.



- If the C++ Redistributable Installation option appears, select **Install**.



- After all progress on the installation is completed, select **Finish**.



- Select **Yes** to reboot the machine to finish the installation.
- Log into the computer if a Username and Password is required after the reboot.
 - Log into the same user that performed the installation so the install can complete successfully.

Repeat steps on each workstation that will be used for Eaglesoft 24.20.